

FOR LEASE

COMMERCIAL PROPERTY

43

EAGLES ROAD

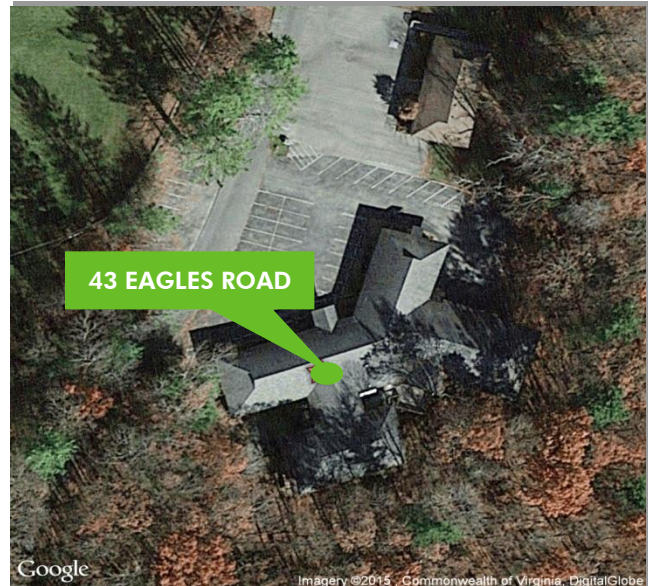
Beckley, West Virginia



PRIME OFFICE SPACE

READY TO BUILD OUT

- + \$15.00 RSF (Above Grade)- 2,176 SF
- + \$10.00 RSF (Below Grade)- 1,960 SF
- + Full Service Lease
- + Beckley amenities
- + .978 Acres of land
- + Paved parking lot
- + Handicapped accessible
- + Hospital nearby
- + One story building



CONTACT US

DEWITT BLUNDON

Associate Broker

+1 304 546 2581

dewitt.blundon@cbre.com

www.cbre.com/westvirginia

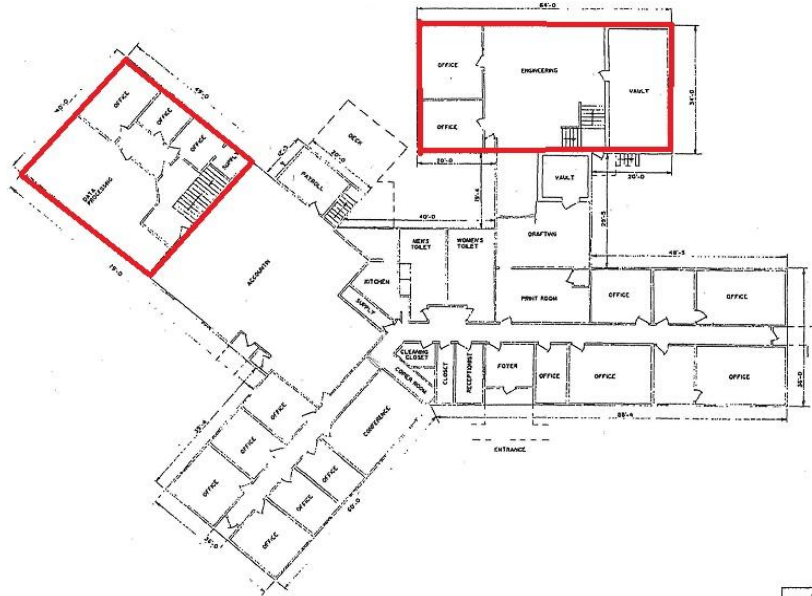
CBRE

FOR LEASE OFFICE SPACE

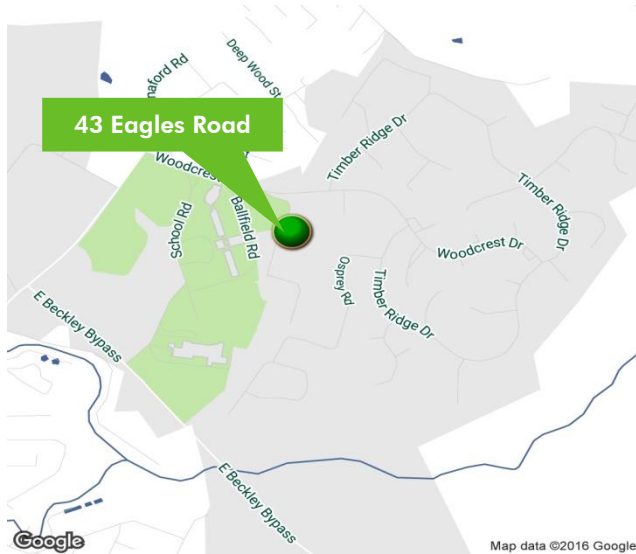
43
EAGLES ROAD
Beckley, West Virginia



SITE PLAN



1/2500 30' FT. (80' IN PLAN)
M.A.E. SERVICES, INC.
DATE: 04/17/16
SCALE: 1/8" = 1'-0"



© 2015 CBRE, Inc. The information contained in this document has been obtained from sources believed reliable. While CBRE, Inc. does not doubt its accuracy, CBRE, Inc. has not verified it and makes no guarantee, warranty or representation about it. It is your responsibility to independently confirm its accuracy and completeness. Any projections, opinions, assumptions or estimates used are for example only and do not represent the current or future performance of the property. The value of this transaction to you depends on tax and other factors which should be evaluated by your tax, financial and legal advisors. You and your advisors should conduct a careful, independent investigation of the property to determine to your satisfaction the suitability of the property for your needs.

Photos herein are the property of their respective owners and use of these images without the express written consent of the owner is prohibited.

www.cbre.com/westvirginia

CBRE